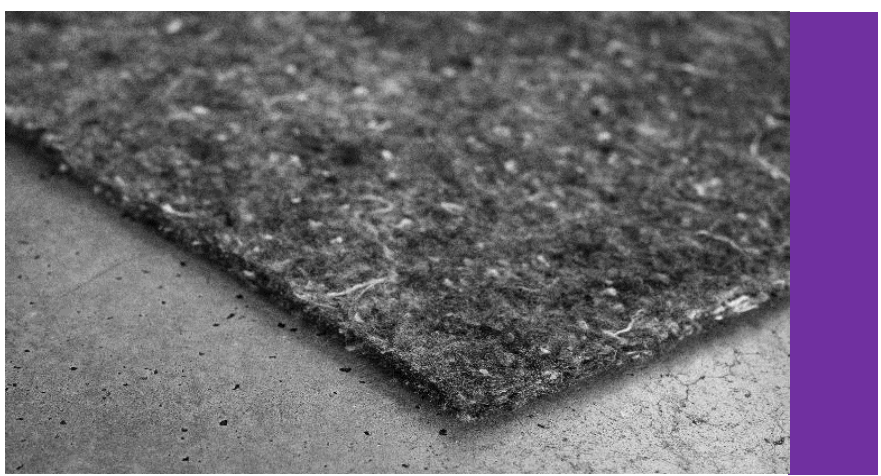


# TRADITIONAL QUALITY NONWOVENS



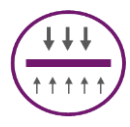
**GETEX**

Nonwoven needle punched textile



- Characteristic:** Nonwoven textile mechanically bonded by needle punching
- Material content:** 100 % Recycled fibres
- Colour:** Multicolour
- Weight:** 200 to 700 g/m<sup>2</sup>
- Standard width:** 1, 2 or 4 m

**Funktion:**



TEMPORARY SEPARATION

**Use:** In construction industry for special applications



Material specification sheet

Date: 25.3.2023

Quality Management System ISO 9001, ISO 14001, ISO 45001 and ISO 50001



# TRADITIONAL QUALITY NONWOVENS

Material specification sheet

Date: 25.3.2023

## GETEX

Nonwoven needle punched textile

GETEX	200	250	300	350	400	500	700	
<b>PHYSICAL PROPERTIES</b>								
Weight [±15 %] / EN 29073-1	g/m <sup>2</sup>	200	250	300	350	400	500	700
Thickness / ČSN EN ISO 9863-1	mm	3,3	3,6	3,8	4,1	4,3	4,5	5
<b>FUNCTION</b>								
Temporary separation	TS	X	X	X	X	X	X	X
<b>CHARACTERISTICS</b>								
Description	Nonwoven textile mechanically bonded by needle punching							
Material content	Recycled fibres							
Colour	Multicolour							
<b>DIMENSION, PACKAGING AND STORAGE</b>								
Roll width	m	1, 2 or 4						
Roll length	m	50	50	50	50	50	25	25
Packaging	Rolls are packed in PE foil.							
Storage	In covered, clean and dry spaces							

The above technical parameters are average values and serve for general information. The manufacturer reserves the right to change it.