



SINCE
1950

TRADITIONAL QUALITY NONWOVENS

UNTEX PES

Nonwoven needle punched textile



STANDARD
100



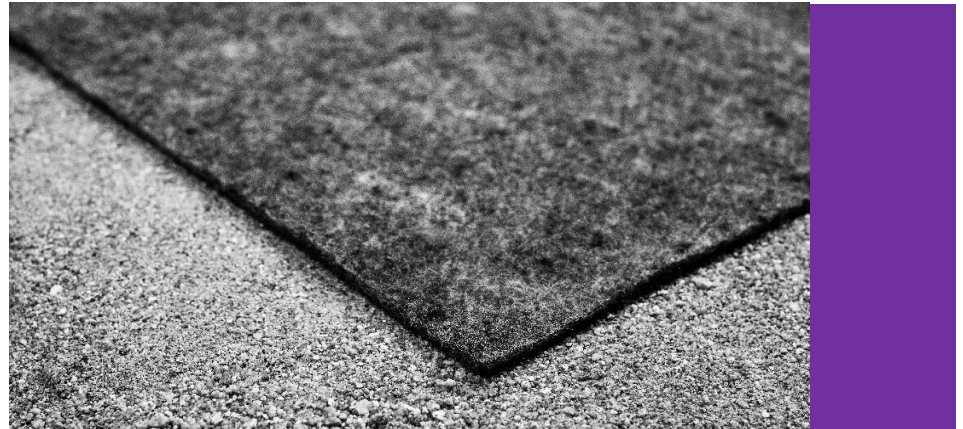
PG035 217550
OETI



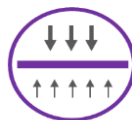
STANDARD
100



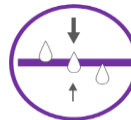
PG035 217573
OETI



- Characteristic:** Nonwoven textile mechanically bonded by needle punching
Material content: 100% polyester
Color: Various
Weight: 150 - 1000 g/m²
Maximum width: 4 m
Function:



SEPARATION



FILTRATION

- Use:** Geotextiles in construction industry, as cleaning textile in various industry sectors and as protection layer in packaging.



Material specification sheet

Date: 22. 5. 2023

Quality Management System ISO 9001, ISO 14001, ISO 45001 and ISO 50001

SINCE
1950

TRADITIONAL QUALITY NONWOVENS

Material specification sheet

Date: 22. 5. 2023

UNTEX PES

Nonwoven needle punched textile

UNTEX PES	150	200	250	300	350	400	500	600	700	800	900	1000		
PHYSICAL PROPERTIES														
Weight [$\pm 10\%$] / EN ISO 9864	g/m ²	150	200	250	300	350	400	500	600	700	800	900	1000	
Thickness 2 kPa [$\pm 15\%$] / EN ISO 9863-1	mm	2,4	2,7	3	3,3	3,5	3,8	4,3	4,6	5	5,6	6,2	6,9	
MECHANICAL PROPERTIES														
Tensile strenght / EN ISO 10319	MD CMD	kn/m	3,5 -0,5 5,5 -0,5	4,5 -0,5 6,5 -0,5	5,5 -0,5 8,5 -0,5	7 -1 10 -1	8 -1 13 -1	11 -2 16 -2	15 -2 20 -2	17 -2 24 -2	19 -2 28 -2	23 -3 33 -3	26 -3 36 -3	28 -3 39 -3
Elongation [$\pm 20\%$] / EN ISO 10319	MD CMD	%	80 80	90 90	90 90	90 90	95 90	95 90	100 100	90 90	90 90	95 95	95 95	95 90
Resistance to static puncture (CBR test) / EN ISO 12236		kn	0,7 -0,1	0,9 -0,1	1,1 -0,1	1,3 -0,1	1,5 -0,1	2 -0,2	2,4 -0,2	2,8 -0,2	3,2 -0,2	3,8 -0,2	4,4 -0,2	5,1 -0,2
Dynamic perforation test (cone drop test) / EN ISO 13433		mm	31 +4	21 +3	18 +2,0	15 +2	11 +2,0	7 +2,0	4 +2,0	2 +2,0	2 +2,0	0 +2	-1 +2	-2 +2
HYDRAULIC PROPERTIES														
Characteristic opening size O_{90} / EN ISO 12956		μm	81 ± 15	94 ± 20	94 ± 15	74 ± 15	74 ± 15	76 ± 15	76 ± 15	76 ± 15	64 ± 15	64 ± 15	64 ± 15	66 ± 15
Water permeability normal to the plane V_{tH50} / EN ISO 11058		l/m ² ·s	48,2 -20	68,9 -0,2	68,9 -20	50,6	50,6 -20	50,7 -20	50,7 -20	50,7 -20	17 -20	17 -20	17 -20	18,4 -20
ENDURANCE														
Resistance to weathering / EN ISO 12224		Cover on day of lay down												
Life expectancy		Min. 5 years in natural soils with 4<pH<9 with soil temperature < 25 °C.												
FUNCTION														
Separation	S	X	X	X	X	X	X	X	X	X	X	X	X	X
Filtration	F	X	X	X	X	X	X	X	X	X	X	X	X	X
Dranaige	D													
Reinforcement	R													
Protection	P													
CHARACTERISTICS														
Description		Nonwoven textile mechanically bonded by needle punching												
Material content		100 % polyester												
Color		Various												
DIMENSION, PACKAGING AND STORAGE														
Roll width	m	4	4	4	4	4	4	4	4	4	4	4	4	4
Roll lenght	m	50	50	50	50	50	50	25	25	25	25	25	25	25
Packaging		Rolls are packed in PE foil, and according to the requirements can be wind up on paper tubes												
Storage		In covered, clean and dry spaces												

The above technical parameters are average values and serve for general information. The manufacturer reserves the right to change it.